

breviglieri

macchine agricole

Radfräs m21-2



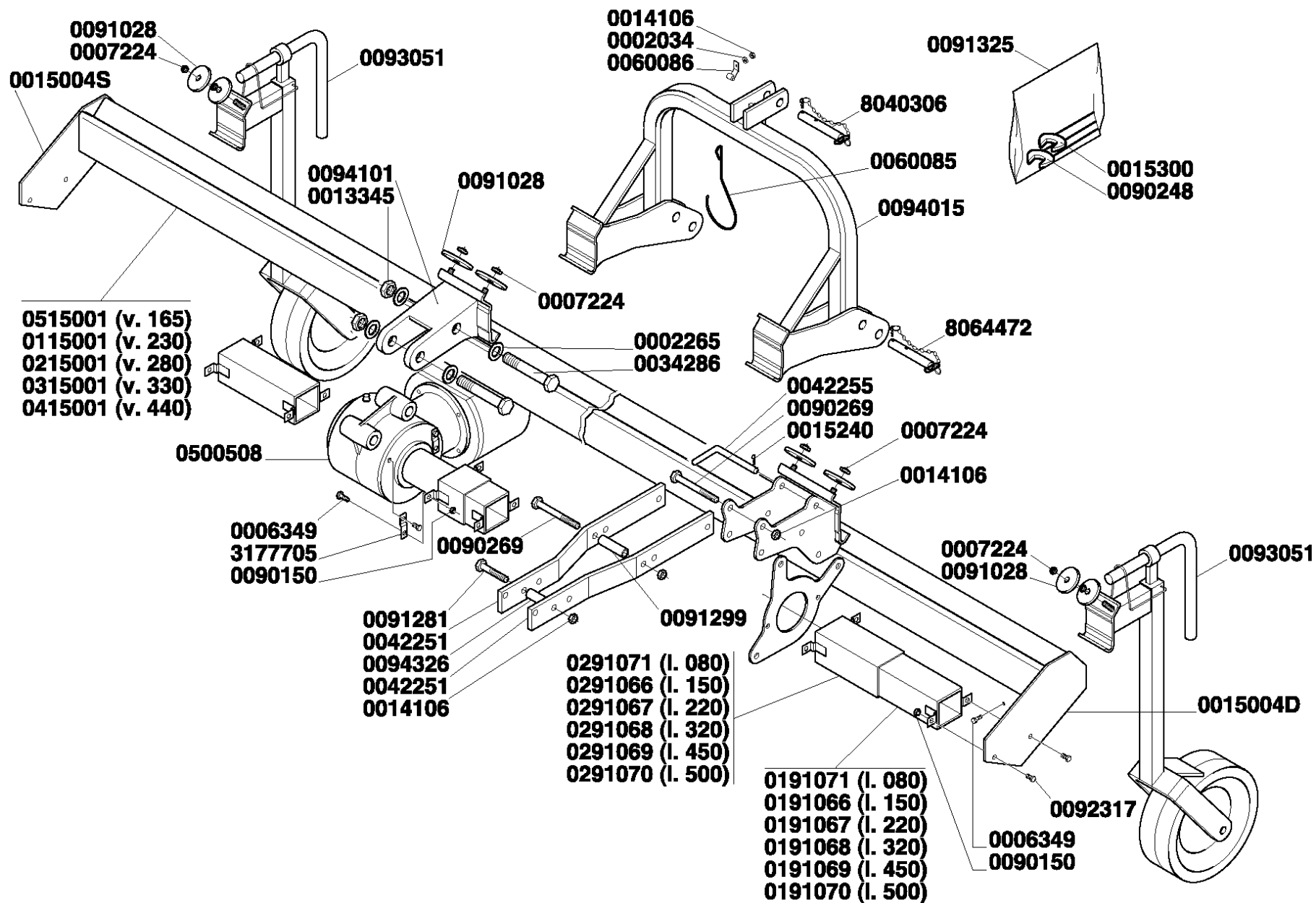
CE

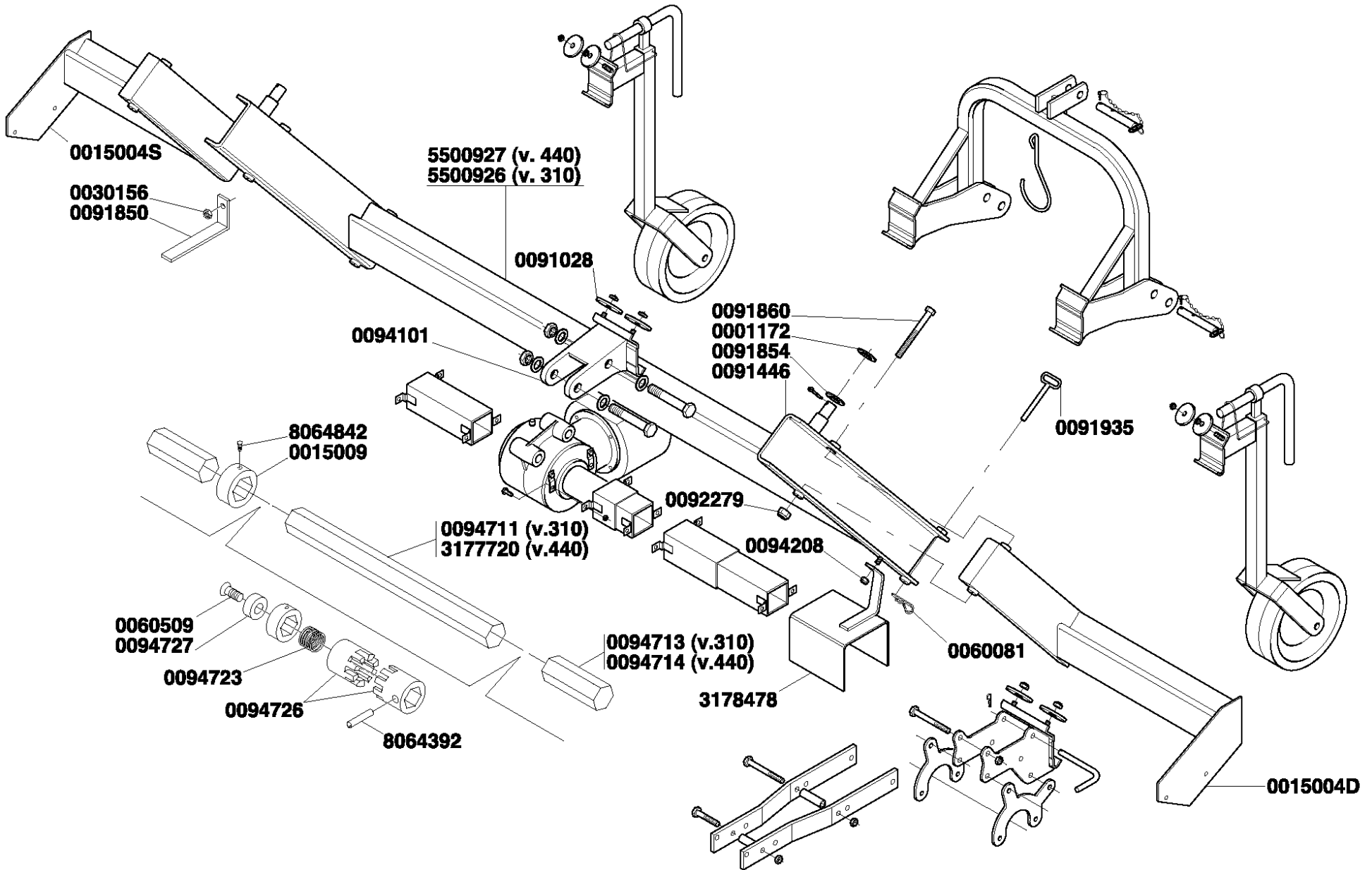


Handbok för drift och underhåll - Reservdelar

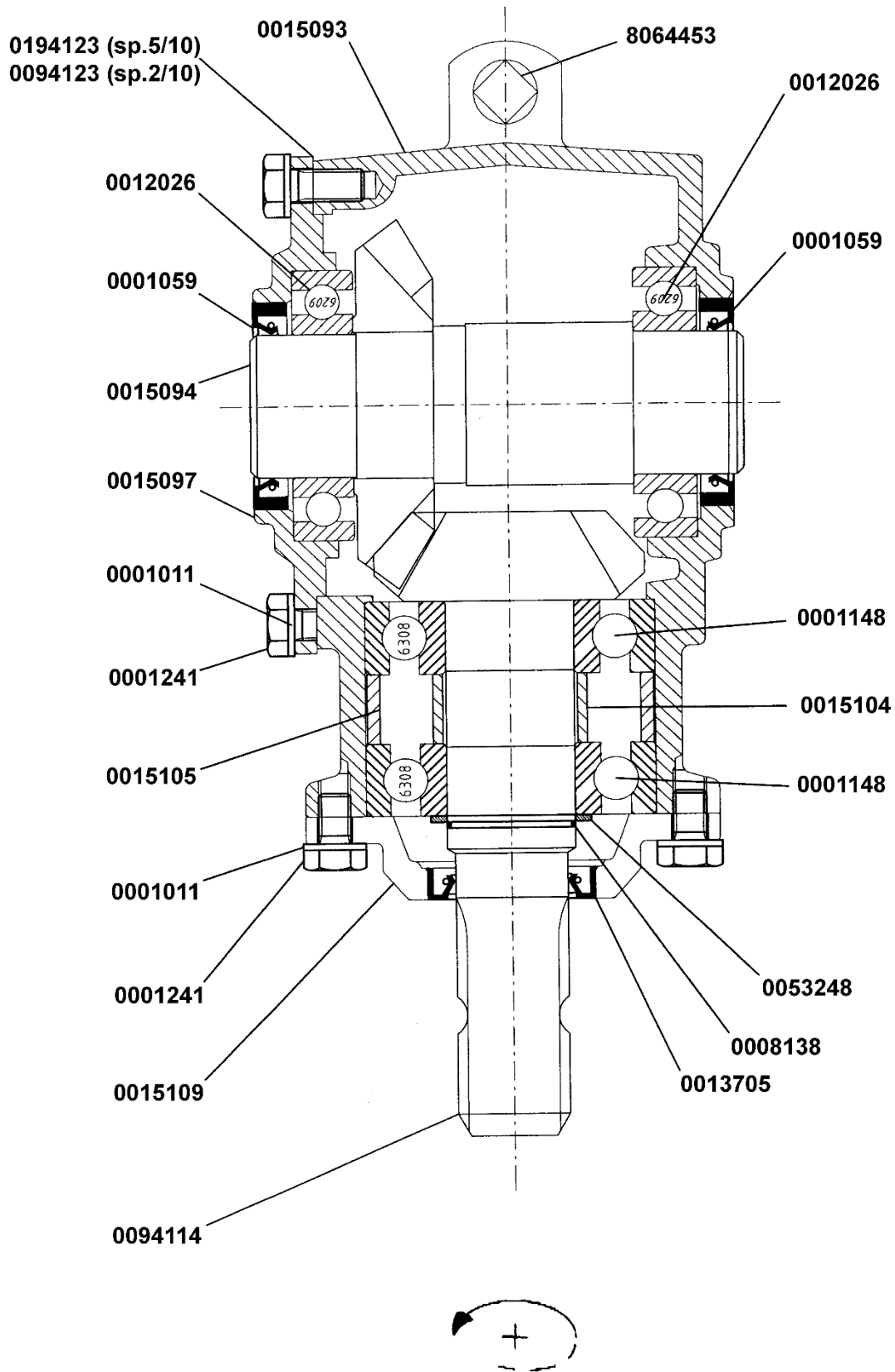
RESERVDELSLISTOR

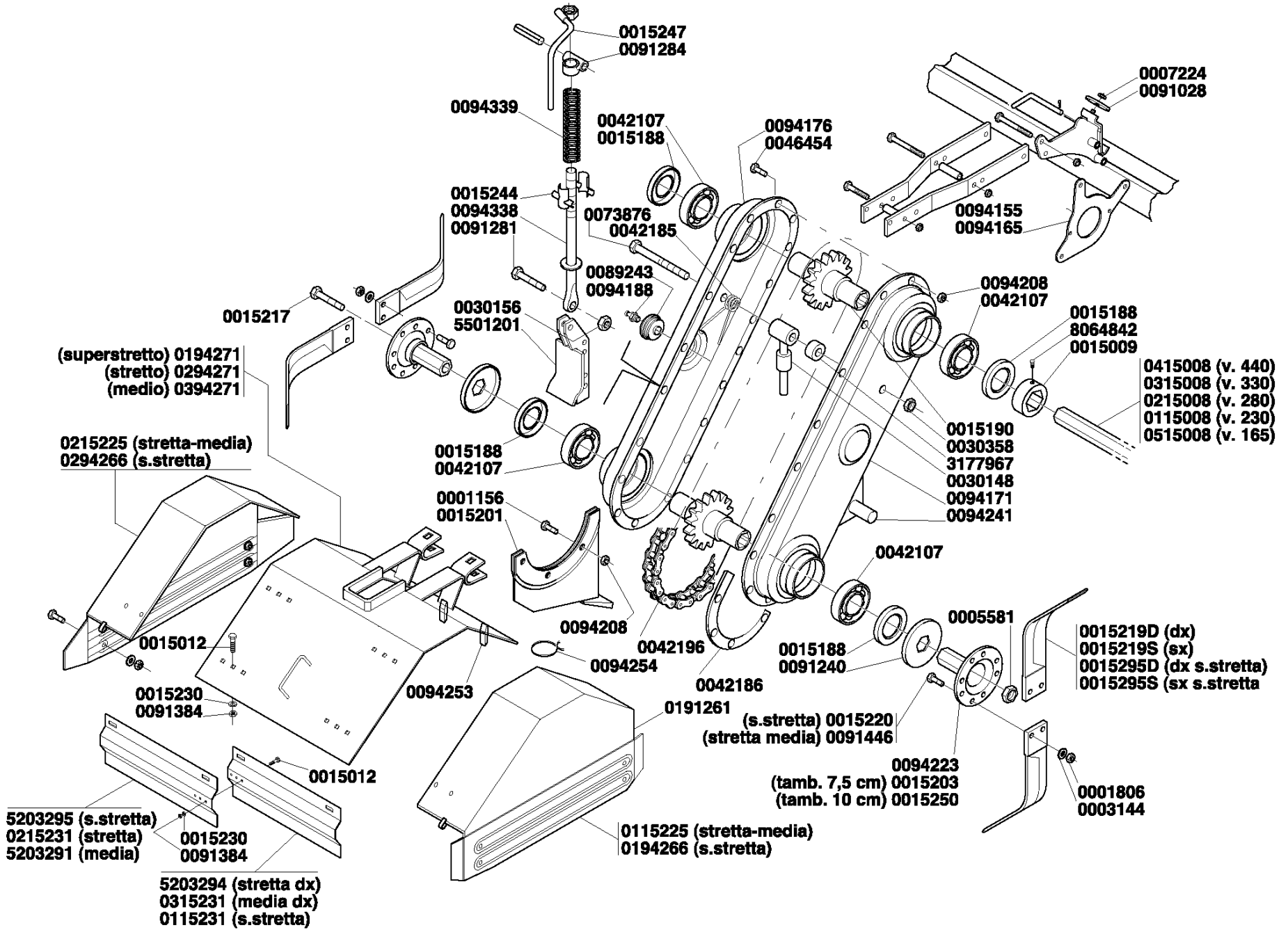
Bild	1	Ram	20
Bild	2	Fällbar ram	21
Bild	3	Central slutväxelenhet	22
Bild	4	Höljen och kåpor	23
Bild	5	Plogrist komplett	24
Bild	6	Hydraulisk växlingsanordning för ram	25
Bild	7	Konstgödselspridare	26
Bild	8	1" 3/8 Z6 (kod. 0500383) normal kraftöverföringsaxel	27
Bild	9	1" 3/8 Z6 (kod. 0500376) kraftöverföringsaxel med brytpinne	28



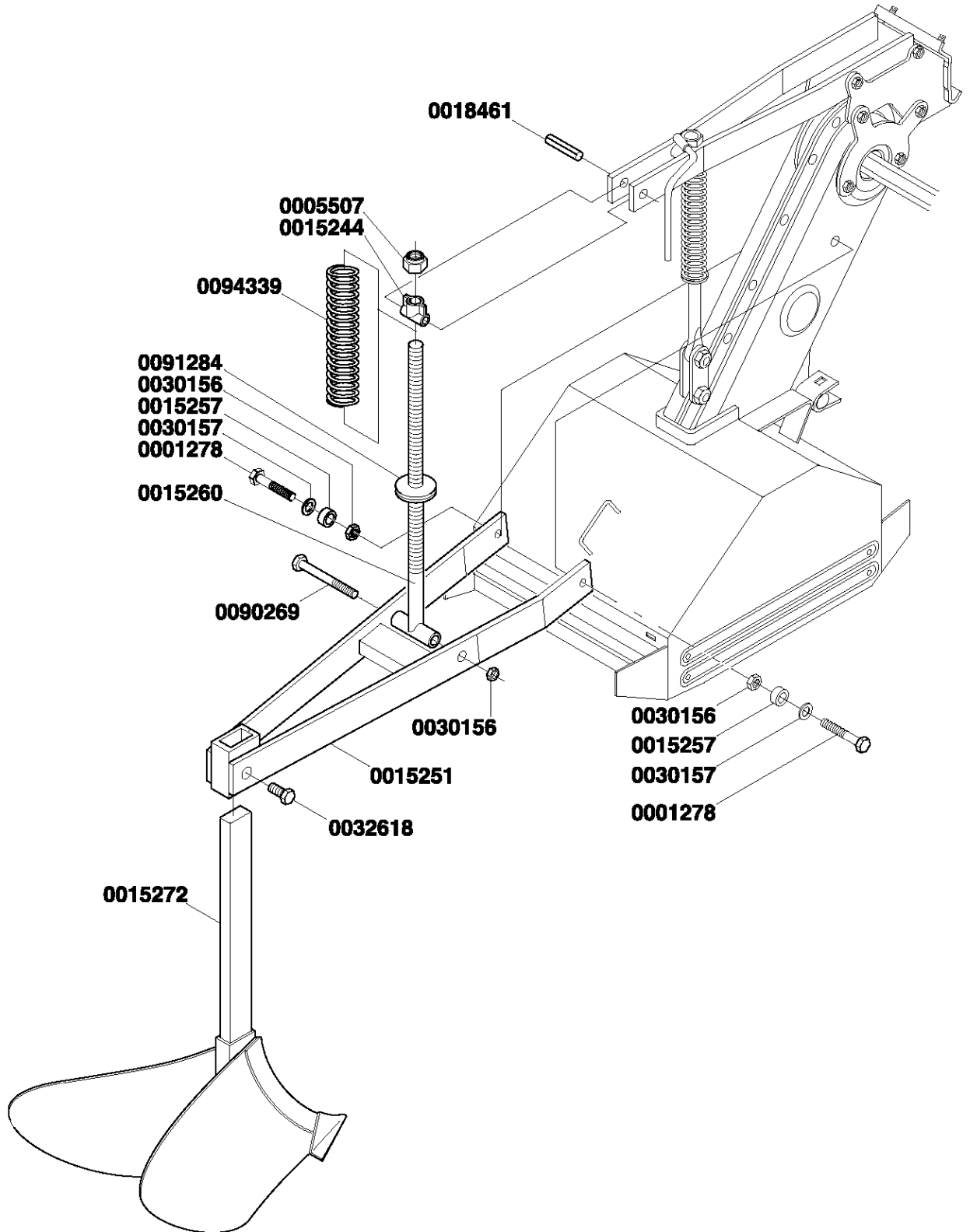


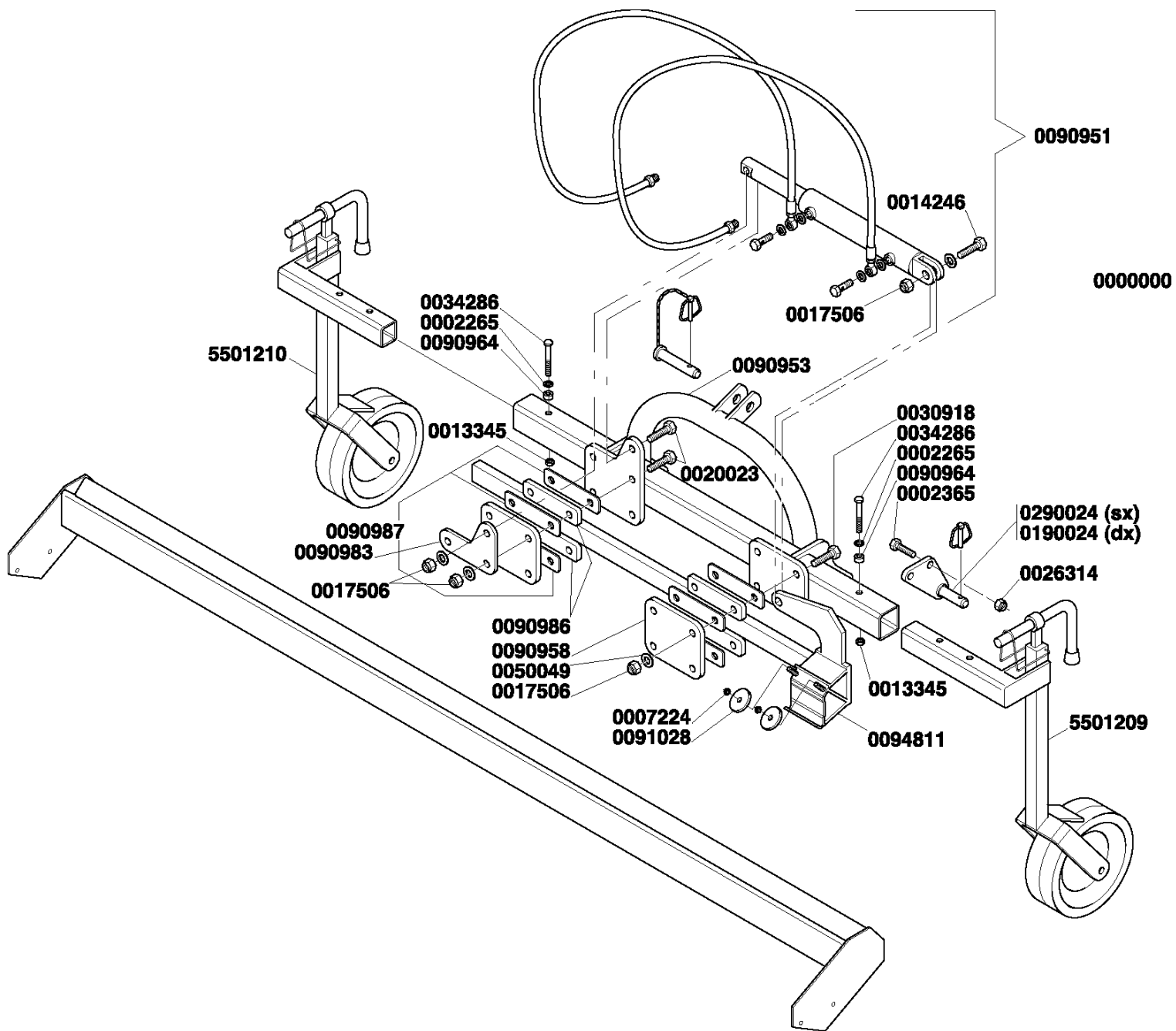
Tav. 3

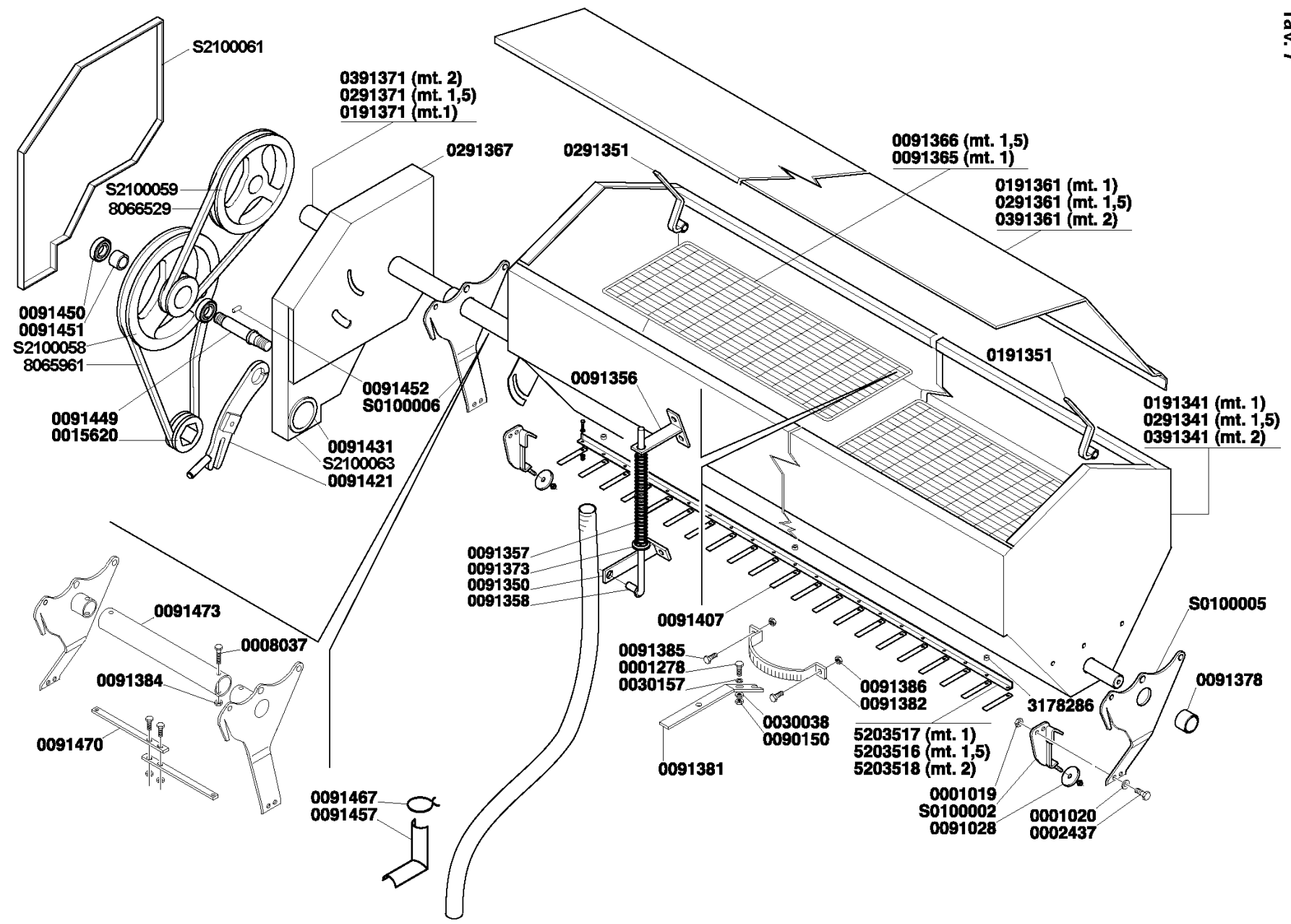




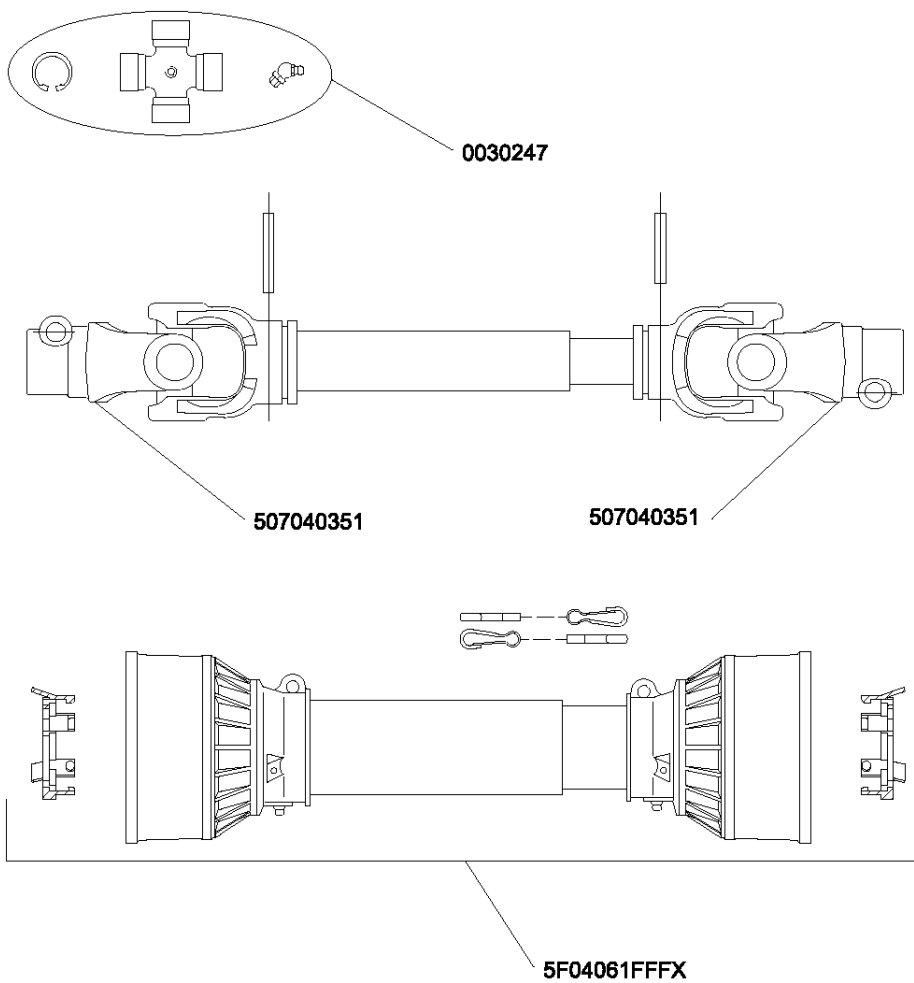
Tav. 5



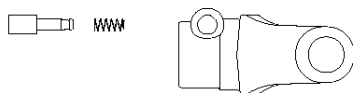




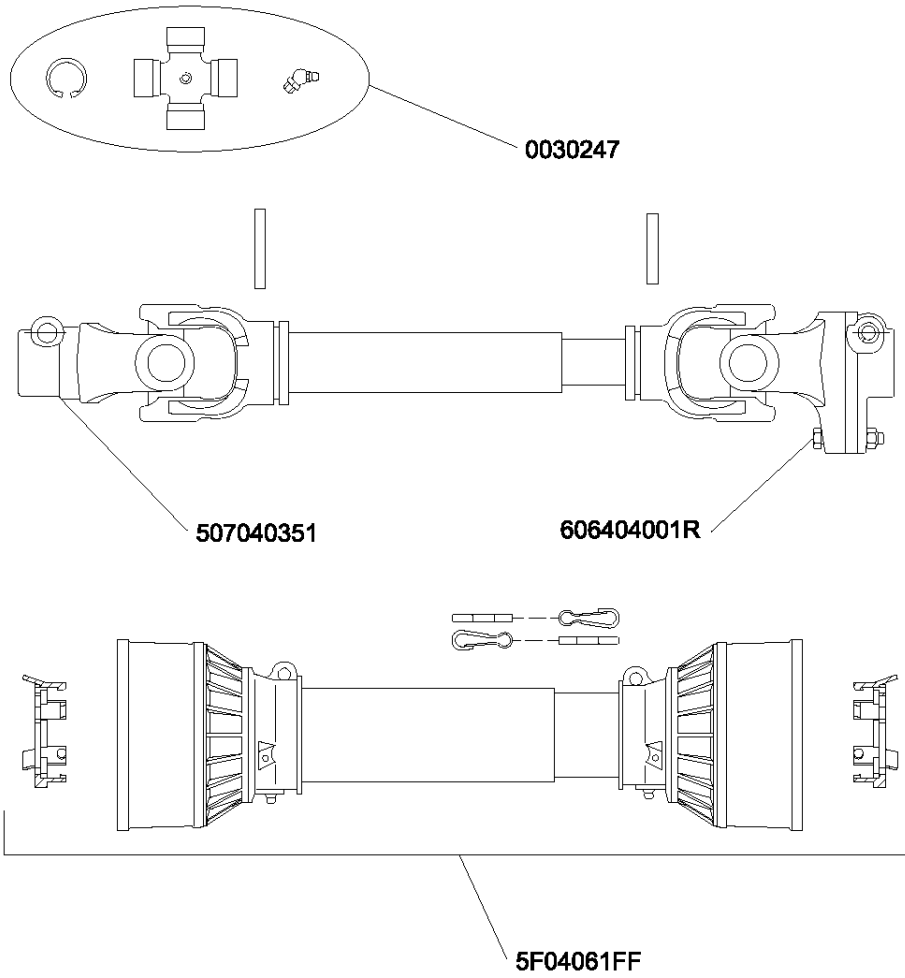
Tav. 8



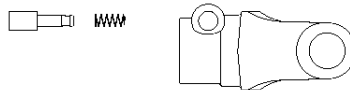
507040351



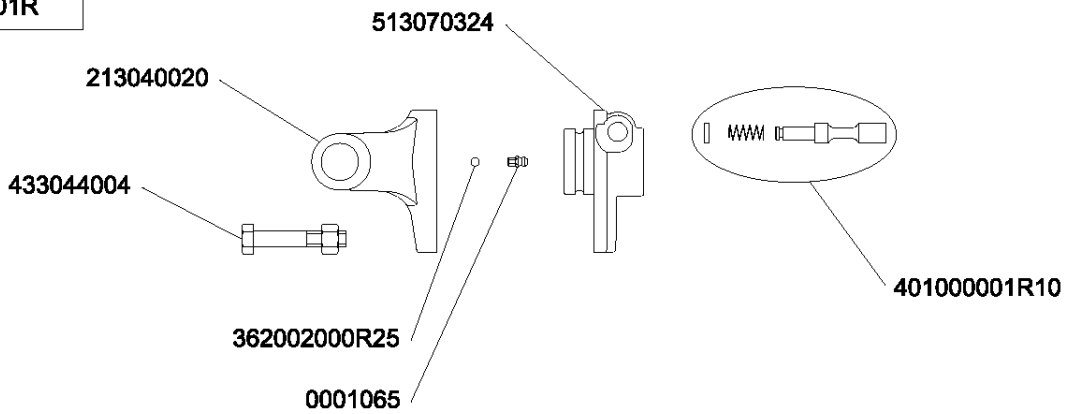
Tav. 9



507040351



606404001R





Via Labriola, 2 - 37054 NOGARA (Verona) - ITALY Tel.

0442537411 r.a. - Fax 0442 537 444

Export: Tel. 0442 537 402

www.breviglieri.com - info@breviglieri.com - export@breviglieri.com

Importör:

Närlant
IMPORT AB

Filarevägen 8, 703 75 Örebro

Tel: 019 – 603 60 60,

Fax: 019 – 31 20 96

Webbadress: www.narlant.se

E-post: info@narlant.se